

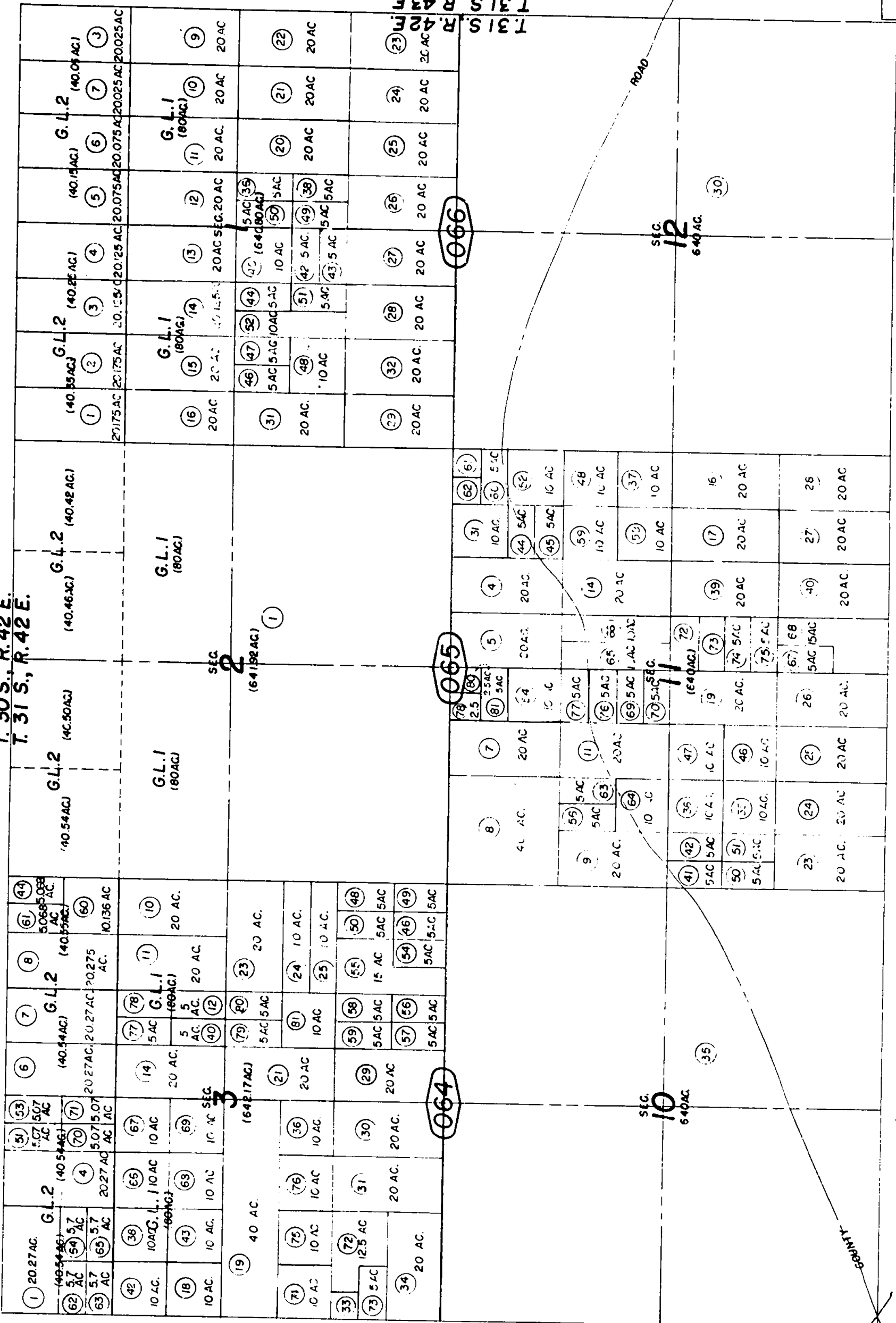


1853

Fractional Secs., 1, 2, 3, & Secs., 10, 11, 12, T. 31 S., R. 42 E., M. D. B. & M.

Barstow Unified Tax Rate Area 56014

504-06



REVISION

1/28/81	AS
4/15/81	AG
3 11 74	GH
11 21 74	GI
2 28 75	II
6 14 75	III
11/23/76	EJS
8-16-79	MM

Assessor's Map  
 Book 504 Page 06  
 San Bernardino County

Note - Assessor's Blk. & Lot Numbers Shown in Circles

Nov. 1958